

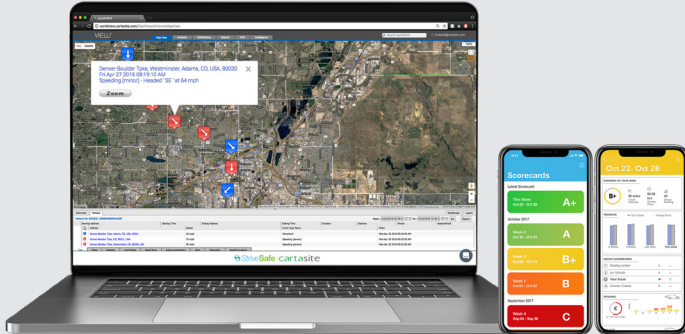


COVERAGE @ WORKSM

Real-Time Vehicle Monitoring

DISCOUNTED MONITORING FOR POLICYHOLDERS

New Mexico Mutual has partnered with StriveSafe to help our policyholders reduce motor vehicle related accidents. We uphold our commitment to help you get your workers home safely to their families.



Easily manage assets

Centralized real-time tracking of your assets, drivers, vehicles, and remote workers in one integrated online dashboard.



Cut fleet maintenance cost

Receive mileage reports, engine diagnostic trouble codes, vehicle recall notifications, recommended preventative maintenance.



Increased efficiency

Save up to a gallon of fuel a day per vehicle by knowing whether drivers are idling excessively, reducing unauthorized vehicle use and curbing aggressive driving.



Increase safety, reduce risks

Maintain the safety and security of every driver & every remote worker. StriveSafe clients have reduced their on-road crash rates by up to 90%.

Get direct feedback about drivers' driving habits, real-time location tracking and vehicle information.

Use code **NMM50** to get **50%** off monthly monitoring services.

30 SECOND INSTALLATION



SCAN ME
to learn more

This program offering is only available to New Mexico Mutual policyholders. Not applicable to Assigned Risk Policies.

Visit our website or call
(303) 317-4813 to learn more.

StriveSafe.com/new-mexico